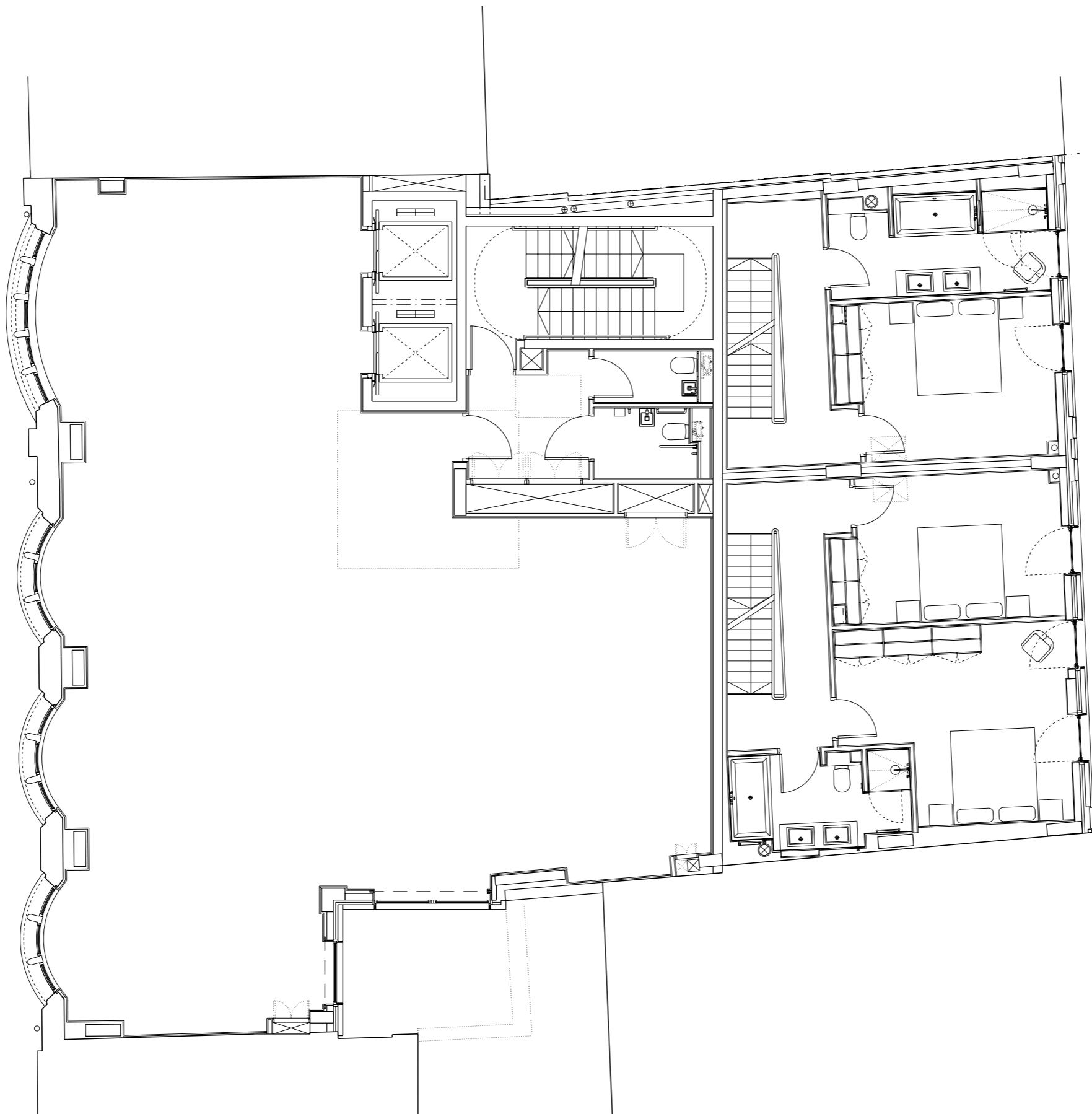


NOTES
 DO NOT SCALE FROM THIS DRAWING.
 ALL DIMENSIONS TO BE CHECKED ON SITE.
 ALL OMISSIONS AND DISCREPANCIES TO BE
 REPORTED TO THE ARCHITECT IMMEDIATELY.



CONTRACT NO: ME 0061



Issued for records	26/11/10	BB	L
Issued for construction	17/07/10	BB	K
Doors omitted, fire curtain rail amended			
Issued for construction	27/04/10	BB	J
Drylining wall types added on & setting out			
Issued for construction	24/03/10	BB	I
Cavity wall amended between grid A-B			
Issued for construction	02/11/09	BB	H
office stair, lifts, columns and bathroom amended, party wall to 1 DM added			
Issued for construction	29/06/09	BB	G
party wall amended, setting out added			
Issued for construction	07/05/09	BB	F
lightwell, structure + rear facades amended			
Issued for information	17/11/08	BB	E
Wall to door and lifts amended, riser moved, column added			
Issued for tender	12/06/08		D
Issued for information	02/06/08	BB	C
Issued for comments	25/04/08	BB	B
Issued for comments	15/04/08	BB	A
	Date	Check	Rev

Squire and Partners

77 Wicklow Street London WC1X 9JY
 T: 020 7278 5555 F: 020 7239 0495

info@squireandpartners.com
 www.squireandpartners.com

Project
 98 - 102 Wigmore Street & 3 - 5 Duke's Mews
 London W1

Drawing
 Second Floor Plan
 Proposed General Arrangement

Drawn	Date	Scale
LC	04/04/2008	1: 50
Job number	Drawing number	Revision
06016	15-01_403	L

Original Drawing Size A1